

pomp

properties



Eastcastle Street, Fitzrovia

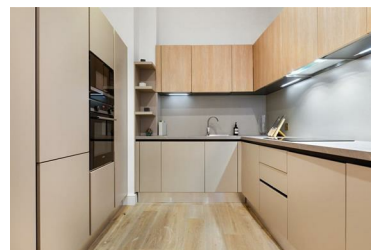
£1,245 Per Week



Set within one of Fitzrovia's most sought-after red-brick mansion blocks, this beautifully renovated apartment offers elegant living in a prime central London location, complete with the convenience of a porter and access to communal outdoor space.

Finished to an exceptional standard throughout, the property boasts impressive ceiling heights and a well-balanced layout. The accommodation comprises two generously sized en-suite bedrooms, including a principal suite with a walk-in wardrobe, a well-appointed kitchen, and a bright and spacious reception room, all enhanced by an abundance of natural light.

Perfectly positioned in the heart of Fitzrovia, the apartment is just moments from Oxford Street, Tottenham Court Road and Regent Street, providing immediate access to world-class shopping, restaurants and entertainment. Excellent transport links are also within easy reach, making this an ideal home for professionals seeking both comfort and convenience in a vibrant central London setting.



6 Hogarth Road, London, SW5 0PT

Tel: 020 7373 4000 Email: enquiries@pompproperties.com